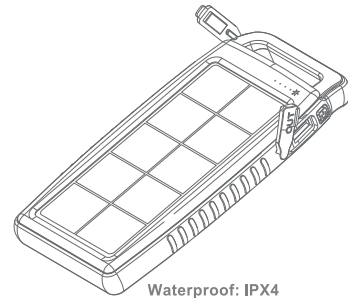


# Solar Charger & Light

## High Efficiency Solar Panel

Thank you for purchasing our solar light & charger. Before the use, we invite you to read carefully the following instructions. You will have a better idea of its features, capabilities and how to use it in the best way.



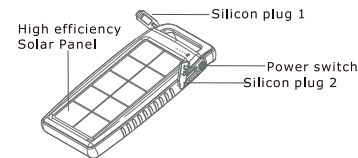
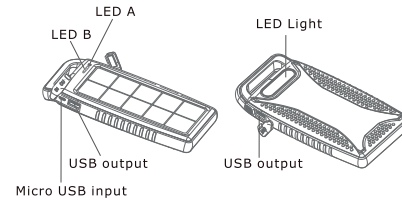
Waterproof: IPX4

## USER MANUAL

Model: **SL CP001**



### Product:



LED A: Indicates the Solar Panel

LED B: Indicates capacity

The side panel of your Solar Charger has 4 LED lights to show the charging status. Working status and the remaining power as follows:

- |                           |                            |
|---------------------------|----------------------------|
| 1 LED on: 10%-40% charge  | 2 LEDs on: 40%-65% charge  |
| 3 LEDs on: 65%-85% charge | 4 LEDs on: 85%-100% charge |

### Accessories:



USB Connection Cable

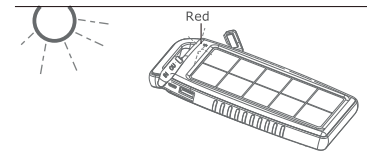
.1.

### How to charge the Solar Charger & Light battery?

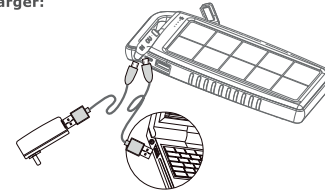
The Solar Charger & Light can be charged in two ways: exposing it under the sunlight or connecting it to a PC USB port/wall charger by using the included USB cable.

#### 1. Charging the battery using the solar panel:

Expose the solar panel under the sunlight. When the charge begins, the red LED light will turn on. The charging current depends from the sun, the stronger it is, the faster it will charge.



#### 2. Charging the battery via PC USB port/wall charger:

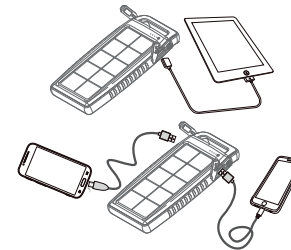


When all 4 LEDs will be bright without blinking, it means the battery is fully charged.

.2.

### How to charge electronic handheld devices?

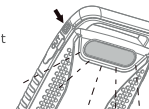
Use the compatible adaptor for the device. Connect the device to the solar charger output port. Turn on the switch to start charging. The LED light will turn on as soon as the charge begins.



\*For Apple devices, must use compatible lightning cables.

### How to lighting

Press button for about 2 second to turn on LED light



The LED light will gradually turn off as the power decrease.

.3.

### Product Features

- 10,000mAh Li-polymer battery.
- Solar charger and solar light both in one.
- Waterproof, dustproof, crashproof.
- Extra-efficient solar panel for a rapid charge.

### Product Specification

- High efficiency Solar Panel: 5.5V/220mA
- Battery type: Lithium polymer
- Capacity: 3.7V/ 10,000mAh
- LED power: 1W
- Lighting time: 30-32 hrs
- Micro USB input: 5V/2A
- USB Output: 2.1A
- Self-charging time: 12 hrs (by laptop)  
6 hrs (by 5V/2A travel charger)  
approx. 55 hours (direct sunlight)
- Power display: 4 LED indicators show power level
- Size: 88mm x 170mm x 18mm.
- Weight: 258g

### Warnings and cautions:

- Do not puncture, throw, drop, bend or modify your SL-CP001.
- Do not throw the battery into fire.
- Do not expose the battery to fire or excessive heat.
- Do not short-circuit the battery with lead or any metal objects.
- Do not transport or store the battery with metal objects such as nail clippers.
- Avoid static electricity, strong magnetic fields and radiation.
- Do not disassemble the battery pack or change its structure.
- Stop using the battery when it generates unusual smell, heating, distortion or any other abnormalities.
- Do not allow children to play with SL-CP001.
- Use the battery in dry locations only.
- Recycle according to local recycling and environmental regulations.

.4.